



CRIPTOZOOLOGY'S MYTHS

MYTHS

CRIPTOZOOLOGY'S

Pablo Durán

Pablo Moya

Alejandro Téllez

Pedro Vázquez



LOCHNESS MONSTER
"NESSIE"

HABITAT OF LOCH NESS MONSTER

- ▶ Loch Ness is a large, deep, freshwater loch in the Scottish Highlands extending for approximately 23 miles (37 kms) southwest of Inverness.
- ▶ The last appearance was in 2014. Loch Ness Monster was detected by a satellite of Apple Maps.
- ▶ The first appearance was in 565 in San Columba. Nessie would have saved someone who was supposedly being attacked by an animal in the lake.

HABITAT OF LOCH NESS MONSTER



ORIGIN

► Who is Nessie?

The modern description given normally would be similar to that presented the fossils of Plesiosaurs. This prehistoric animal should be a physically huge animal with a long neck, a small head and two pairs of fins for propulsion underwater.



CHUPACABRA



Wild



domestic

LEGEND AND HABITAT

- The Chupacabras is the most popular cryptid in South America.
- The first reported attacks occurred in March 1995 in Puerto Rico. In this attack, eight goats were found dead, and a strange animal drank their blood.
- The Chupacabras was originally reported in Puerto Rico but other deaths were reported in countries such as Argentina, Bolivia, Peru, Mexico and other countries of South America.

El Chupacabra



APPEARENCE AND CURIOSITIES

- ▶ The most common description of the Chupacabra is that of a reptile-like creature, said to have leathery or scaly greenish-gray skin and sharp spines or quills running down its back. It is said to be approximately 3 to 4 feet (1 to 1.2 m) high.
- ▶ Initially, it was suspected that the Chupacabra's killings were committed by a Satanic Cult.
- ▶ Other names of the Chupacabra are The Vampire of Moca, Grunch Road, Pechuen and Sigbin.

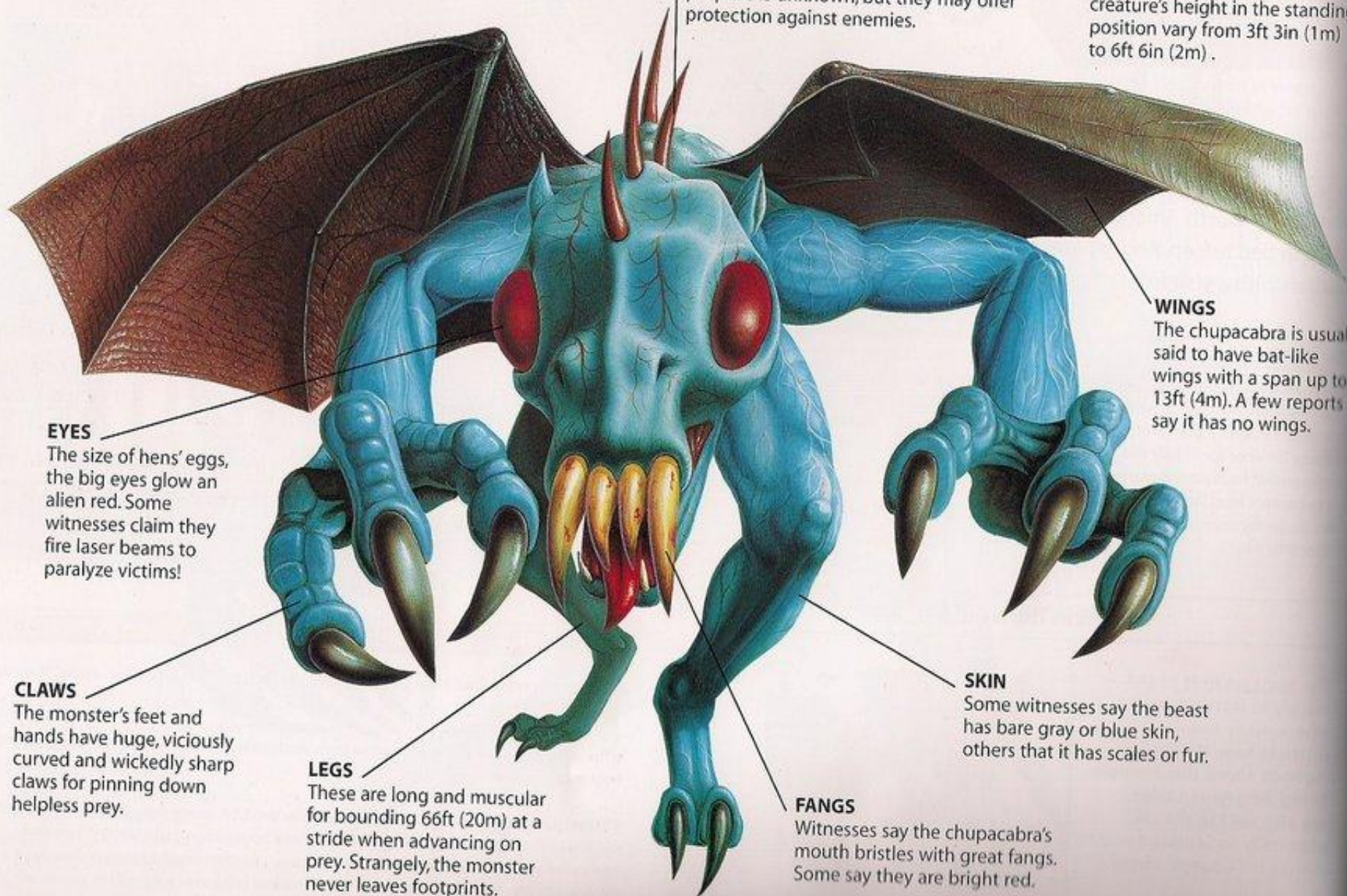
CHUPACABRA

SPINES

These reportedly burst through the skin of the monster's head and back. Their purpose is unknown, but they may offer protection against enemies.

SIZE

Eyewitness accounts are muddled. Estimates of the creature's height in the standing position vary from 3ft 3in (1m) to 6ft 6in (2m).



EYES

The size of hens' eggs, the big eyes glow an alien red. Some witnesses claim they fire laser beams to paralyze victims!

WINGS

The chupacabra is usually said to have bat-like wings with a span up to 13ft (4m). A few reports say it has no wings.

CLAWS

The monster's feet and hands have huge, viciously curved and wickedly sharp claws for pinning down helpless prey.

LEGS

These are long and muscular for bounding 66ft (20m) at a stride when advancing on prey. Strangely, the monster never leaves footprints.

SKIN

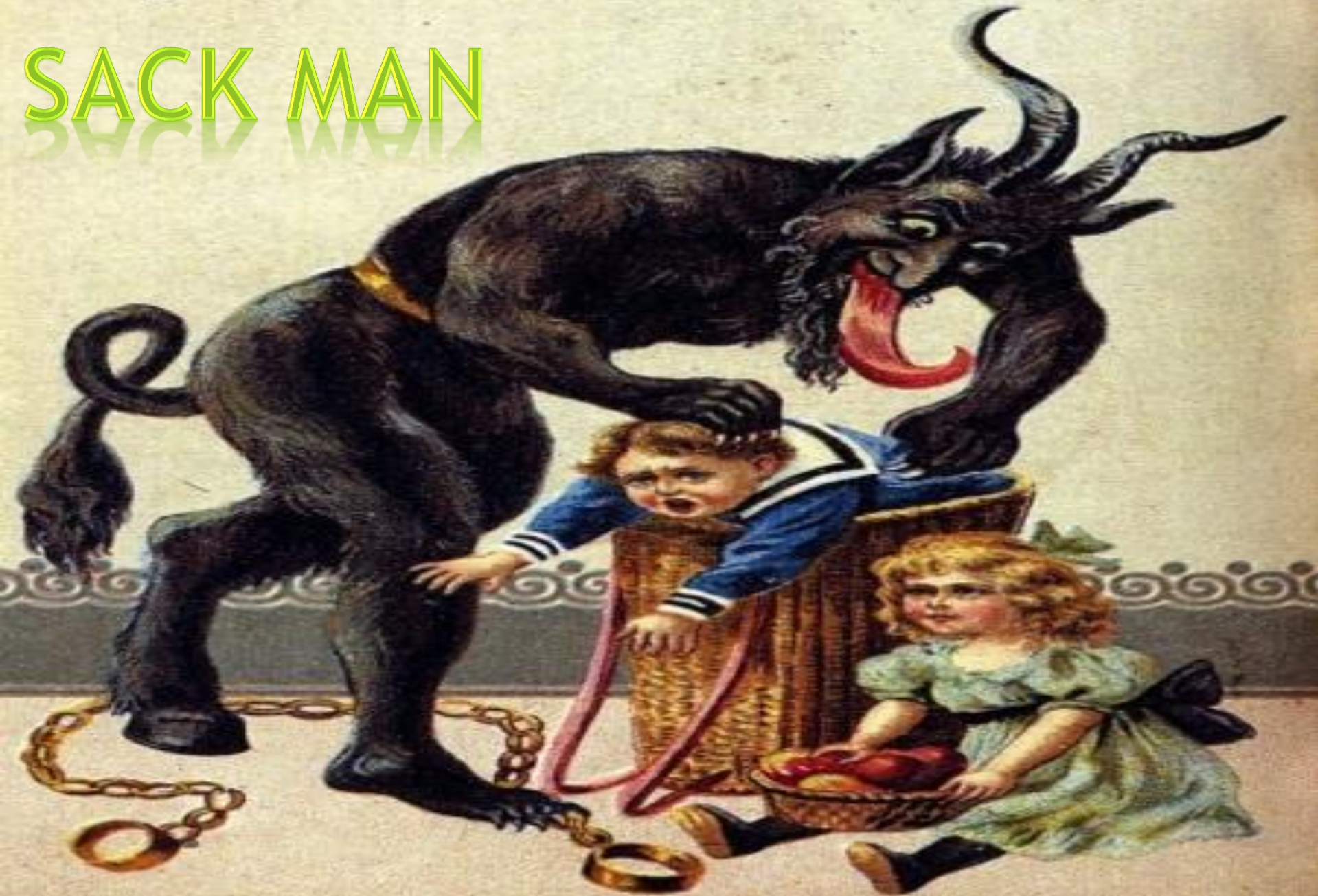
Some witnesses say the beast has bare gray or blue skin, others that it has scales or fur.

FANGS

Witnesses say the chupacabra's mouth bristles with great fangs. Some say they are bright red.

Gruß vom Krampus!

SACK MAN



WHAT IS THE SACK MAN?

- ▶ The sack man , also called the bag man, He had a sack on his back which got kidnapped children . This character was created in order to scare the children so they soon returned home.



STORY

- ▶ The sack man legend is real based on a crime committed in Gádor, in 1910. He was critically ill with tuberculosis and was desperately looking for a cure. He went to a healer, the remedy revealed to him: had to drink the blood of a healthy child, freshly out of the body, and put in the chest plasters of the still hot lard of the creature. He promised that way it would heal quickly.



CÓMETELO TODO... O VENDRÁ EL HOMBRE DEL SACO.

YEFH



WHAT IS YETI?

- ▶ The Yeti is an ape-like cryptid taller than an average human that is said to inhabit the Himalayan region of Nepal and Tibet.



INVESTIGATION

- ▶ The scientific community generally regards the Yeti as a legend, given the lack of conclusive evidence, but it remains one of the most famous creatures of cryptozoology.
- ▶ In 2014, however, two hair samples taken from remote regions of the Himalayas have been found to show a 100 per cent genetic match to a prehistoric polar-bear-like creature that existed more than 40,000 years ago.



3 THINGS YOU MAY NOT KNOW ABOUT THE YETI

1. The Nepalese believe the Yeti is nocturnal, it whistles and growls, and can kill with a single punch.
2. The first publicised report of a Yeti sighting came from a German photographer in 1925, but many Nepalese claim to have seen it.
3. In 2008, Japanese adventurers said they discovered footprints they believe were made by the Yeti. The footprints were about eight inches long and looked like a human's.





CREDITS

LOCH NESS MONSTER:

Pedro Vázquez

“CHUPACABRA”:

Pablo Moya

THE SACK MAN:

Alejandro Téllez

YETI:

Pablo Durán